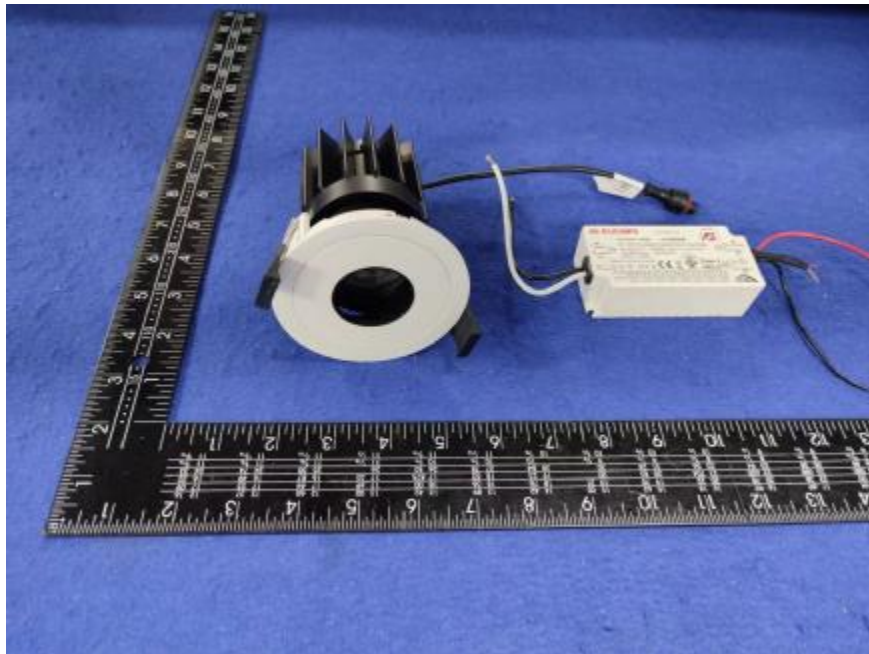


## Luminaire Photograph



Light Output Ratio:	64.2%	
Luminaire Power:	13.84 W	
SHR Nominal:	0.75	Calculated using the TM5
SHR Maximum:	0.80	fine grid method.

C Range: 0 - 360DEG  
C Interval: 30.0DEG  
Test Speed: HIGH  
Temperature: 25.3 °C  
Operators: zoe  
Test Date: 2023-12-18

γ Range: 0 - 180DEG  
γ Interval: 1.0DEG  
Test System: EVERFINE GO-SPEX500\_V1 SYSTEM V2.00.461  
Humidity: 65.0%  
Test Distance: 3.160m [K=1.0000]  
Remarks: LAMP: BXRE-30G1000-A-83 Ra:90  
LENS: PM-1082C 50R  
DRIVER: PUP20A-1WMC 350mA  
30minutes warm-up

## LUMINOUS INTENSITY DISTRIBUTION DIAGRAM

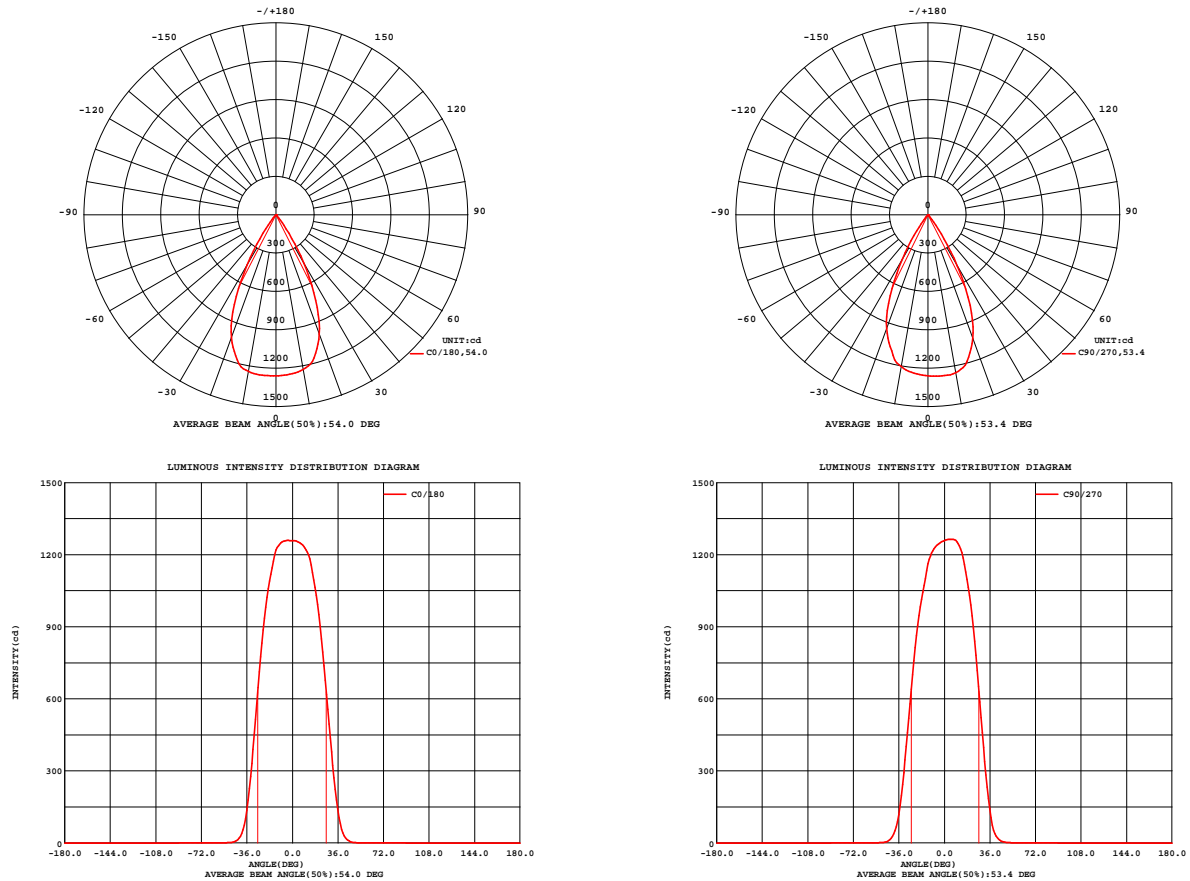


Fig. C0/C180

Fig. C90/C270

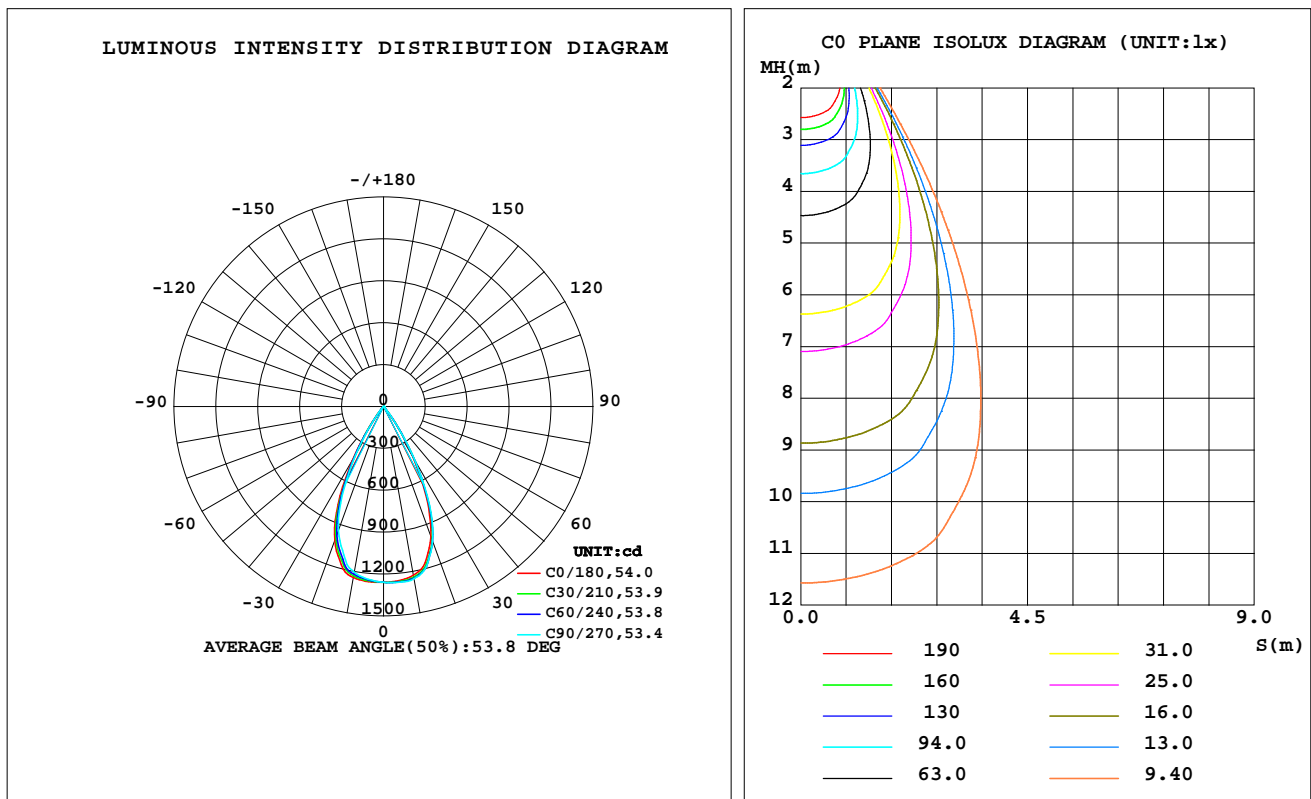
C Range: 0 - 360DEG  
C Interval: 30.0DEG  
Test Speed: HIGH  
Temperature: 25.3 °C  
Operators: zoe  
Test Date: 2023-12-18

γ Range: 0 - 180DEG  
γ Interval: 1.0DEG  
Test System: EVERFINE GO-SPEX500\_V1 SYSTEM V2.00.461  
Humidity: 65.0%  
Test Distance: 3.160m [K=1.0000]  
Remarks: LAMP: BXRE-30G1000-A-83 Ra: 90  
LENS: PM-1082C 50R  
DRIVER: PUP20A-1WMC 350mA  
30minutes warm-up

## LUMINAIRE PHOTOMETRIC TEST REPORT

Test:U:120.16V I:0.1162A P:13.844W PF:0.9901 Freq:59.98Hz Lamp Flux:1402.44x1 lm		
NAME: 2318.115-LEA-14	TYPE:	WEIGHT:
SPEC.: 3000K	DIM.:	SERIAL No.: 2312181458
MFR.: RISE	SUR.: 0.0007065m2	Shielding Angle:

DATA OF LAMP		PHOTOMETRIC DATA				Eff: 65.06 lm/W
MODEL	Bridgelux	Imax(cd)	1266	S/MH(C0/180)	0.80	
NOMINAL POWER(W)	14	LOR(%)	64.2	S/MH(C90/270)	0.78	
RATED VOLTAGE(V)	120	TOTAL FLUX(lm)	900.60	$\eta$ UP,DN(C0-180)	0.0,32.9	
NOMINAL FLUX(lm)	1402.44	CIE CLASS	DIRECT	$\eta$ UP,DN(C180-360)	0.0,31.3	
LAMPS INSIDE	1	$\eta$ up(%)	0.0	CIBSE SHR NOM	0.75	
TEST VOLTAGE(V)	120	$\eta$ down(%)	64.2	CIBSE SHR MAX	0.80	



C Range: 0 - 360DEG  
C Interval: 30.0DEG  
Test Speed: HIGH  
Temperature:25.3℃  
Operators:zoe  
Test Date:2023-12-18

$\gamma$  Range: 0 - 180DEG  
 $\gamma$  Interval: 1.0DEG  
Test System:EVERFINE GO-SPEX500\_V1 SYSTEM V2.00.461  
Humidity:65.0%  
Test Distance:3.160m [K=1.0000]  
Remarks: LAMP:BXRE-30G1000-A-83 Ra:90  
LENS:PM-1082C 50R  
DRIVER:PUP20A-1WMC 350mA  
30minutes warm-up

## ZONAL FLUX DIAGRAM

### ZONAL FLUX DIAGRAM:

$\gamma$	C0	C45	C90	C135	C180	C225	C270	C315	$\gamma$	$\Phi$ zone	$\Phi$ total	%lum,lamp
10	1227	1245	1253	1252	1243	1226	1206	1210	0- 10	119.1	119.1	13.2,8.49
20	993.4	1023	1029	1034	1022	988.6	947.1	953.2	10- 20	320.3	439.4	48.8,31.3
30	436.4	452.9	459.2	463.0	450.8	419.0	401.6	410.3	20- 30	333.0	772.4	85.8,55.1
40	41.94	40.90	39.26	39.07	39.11	38.23	37.92	40.24	30- 40	118.1	890.5	98.9,63.5
50	1.455	1.485	1.957	2.335	1.655	1.587	1.771	1.753	40- 50	8.703	899.2	99.8,64.1
60	0.3187	0.2860	0.4783	0.7967	0.6517	0.6377	0.7103	0.6580	50- 60	0.8290	900.0	99.9,64.2
70	0.1657	0.1631	0.2084	0.2997	0.2723	0.2659	0.2789	0.2412	60- 70	0.3975	900.4	100,64.2
80	0.0667	0.0687	0.0654	0.0703	0.0685	0.0617	0.0672	0.0553	70- 80	0.1467	900.6	100,64.2
90	0	0	0	0	0	0	0	0	80- 90	0.0295	900.6	100,64.2
100	0	0	0	0	0	0	0	0	90-100	0	900.6	100,64.2
110	0	0	0	0	0	0	0	0	100-110	0	900.6	100,64.2
120	0	0	0	0	0	0	0	0	110-120	0	900.6	100,64.2
130	0	0	0	0	0	0	0	0	120-130	0	900.6	100,64.2
140	0	0	0	0	0	0	0	0	130-140	0	900.6	100,64.2
150	0	0	0	0	0	0	0	0	140-150	0	900.6	100,64.2
160	0	0	0	0	0	0	0	0	150-160	0	900.6	100,64.2
170	0	0	0	0	0	0	0	0	160-170	0	900.6	100,64.2
180	0	0	0	0	0	0	0	0	170-180	0	900.6	100,64.2
DEG	LUMINOUS INTENSITY:cd									UNIT:lm		

C Range: 0 - 360DEG  
C Interval: 30.0DEG  
Test Speed: HIGH  
Temperature:25.3℃  
Operators:zoe  
Test Date:2023-12-18

$\gamma$  Range: 0 - 180DEG  
 $\gamma$  Interval: 1.0DEG  
Test System:EVERFINE GO-SPEX500\_V1 SYSTEM V2.00.461  
Humidity:65.0%  
Test Distance:3.160m [K=1.0000]  
Remarks: LAMP:BXRE-30G1000-A-83 Ra:90  
LENS:PM-1082C 50R  
DRIVER:PUP20A-1WMC 350mA  
30minutes warm-up

### LUMINANCE LIMITATION CURVES

Test:U:120.16V I:0.1162A P:13.844W PF:0.9901 Freq:59.98Hz  
Lamp Flux:1402.44x1 lm

NAME: 2318.115-LEA-14

TYPE:

WEIGHT:

SPEC.: 3000K

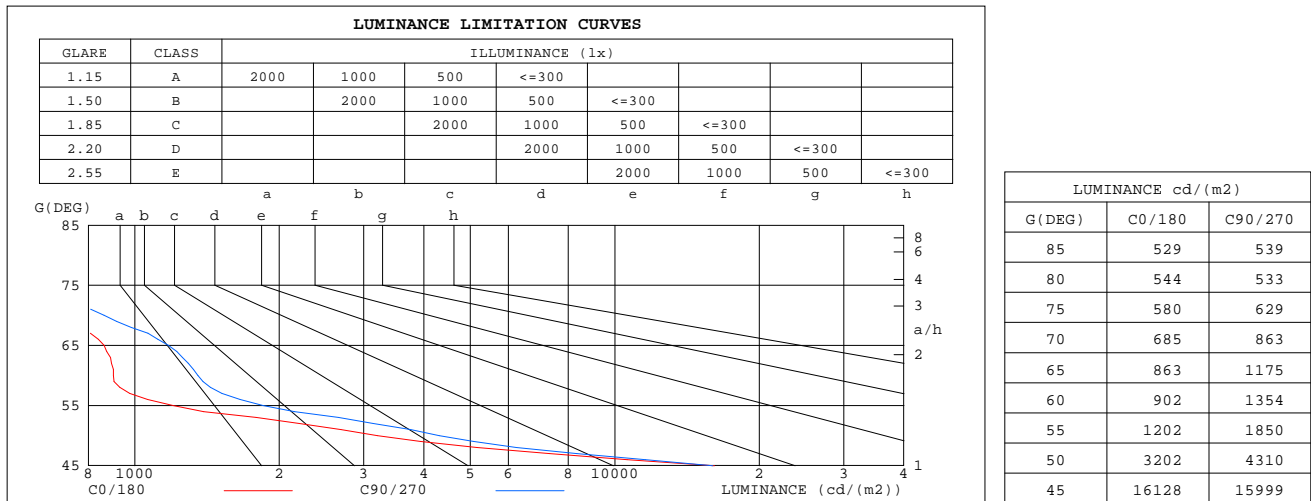
DIM.:

SERIAL No.: 2312181458

MFR.: RISE

SUR.: 0.0007065m2

Shielding Angle:



C Range: 0 - 360DEG  
C Interval: 30.0DEG  
Test Speed: HIGH  
Temperature:25.3℃  
Operators:zoe  
Test Date:2023-12-18

γ Range: 0 - 180DEG  
γ Interval: 1.0DEG  
Test System:EVERFINE GO-SPEX500\_V1 SYSTEM V2.00.461  
Humidity:65.0%  
Test Distance:3.160m [K=1.0000]  
Remarks: LAMP:BXRE-30G1000-A-83 Ra:90  
LENS:PM-1082C 50R  
DRIVER:PUP20A-1WMC 350mA  
30minutes warm-up

## CU AND LUMINAIRE BUDGETARY ESTIMATE DIAGRAM

Test:U:120.16V I:0.1162A P:13.844W PF:0.9901 Freq:59.98Hz  
Lamp Flux:1402.44lx1 lm

NAME: 2318.115-LEA-14

TYPE:

WEIGHT:

SPEC.: 3000K

DIM.:

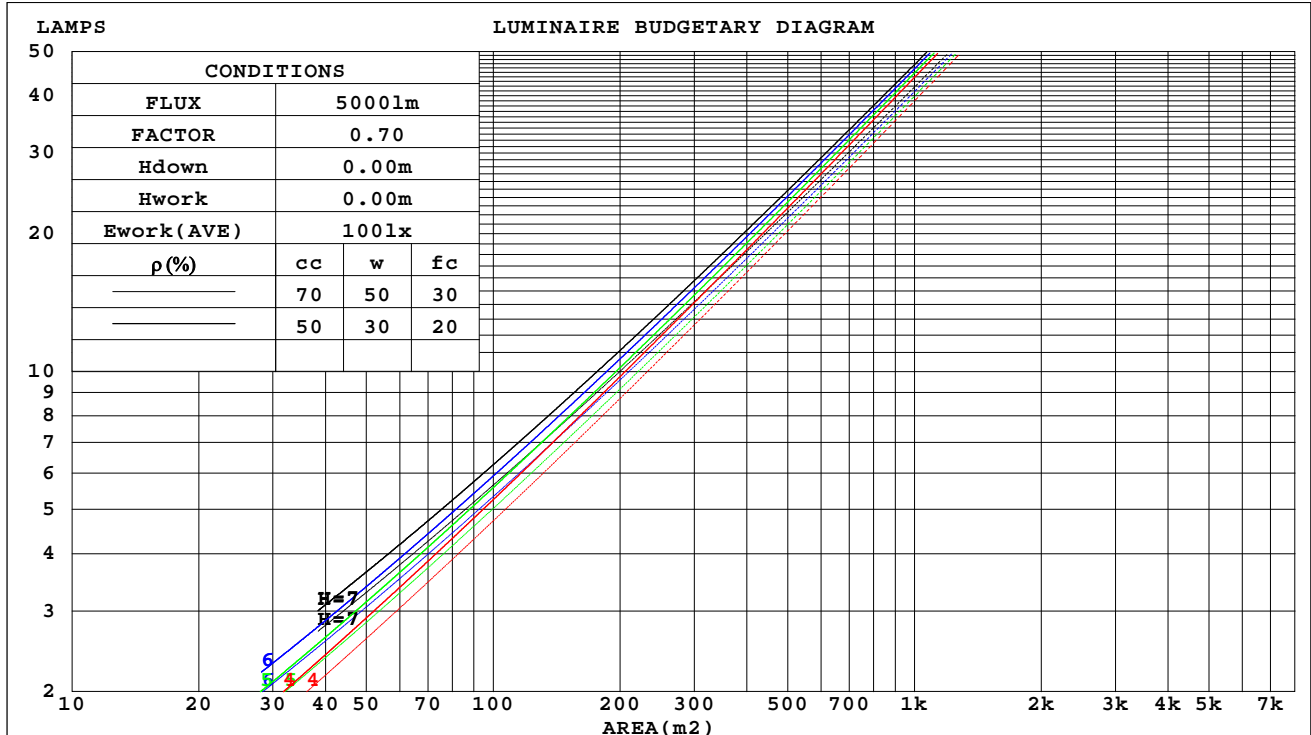
SERIAL No.: 2312181458

MFR.: RISE

SUR.: 0.0007065m2

Shielding Angle:

$\rho_{cc}$	80%			70%			50%			30%			10%			0
$\rho_w$	50%	30%	10%	50%	30%	10%	50%	30%	10%	50%	30%	10%	50%	30%	10%	0
$\rho_{fc}$	20%			20%			20%			20%			20%			0
RCR	RCR:Room Cavity Ratio			Coefficients of Utilization(CU)												
0.0	.76	.76	.76	.75	.75	.75	.71	.71	.71	.68	.68	.68	.66	.66	.66	.64
1.0	.72	.70	.69	.70	.69	.68	.68	.67	.66	.65	.64	.64	.63	.62	.62	.61
2.0	.67	.65	.63	.66	.64	.62	.64	.62	.61	.62	.61	.60	.61	.59	.58	.57
3.0	.63	.60	.58	.62	.60	.58	.61	.59	.57	.59	.57	.56	.58	.56	.55	.54
4.0	.60	.57	.54	.59	.56	.54	.58	.55	.53	.56	.54	.53	.55	.54	.52	.51
5.0	.57	.53	.51	.56	.53	.50	.55	.52	.50	.54	.51	.50	.53	.51	.49	.48
6.0	.54	.50	.48	.53	.50	.47	.52	.49	.47	.51	.49	.47	.50	.48	.47	.46
7.0	.51	.47	.45	.50	.47	.45	.50	.47	.45	.49	.46	.44	.48	.46	.44	.43
8.0	.48	.45	.42	.48	.45	.42	.47	.44	.42	.47	.44	.42	.46	.44	.42	.41
9.0	.46	.43	.40	.46	.42	.40	.45	.42	.40	.45	.42	.40	.44	.42	.40	.39
10.0	.44	.40	.38	.44	.40	.38	.43	.40	.38	.43	.40	.38	.42	.40	.38	.37



C Range: 0 - 360DEG  
C Interval: 30.0DEG  
Test Speed: HIGH  
Temperature:25.3℃  
Operators:zoe  
Test Date:2023-12-18

$\gamma$  Range: 0 - 180DEG  
 $\gamma$  Interval: 1.0DEG  
Test System:EVERFINE GO-SPEX500\_V1 SYSTEM V2.00.461  
Humidity:65.0%  
Test Distance:3.160m [K=1.0000]  
Remarks: LAMP:BXRE-30G1000-A-83 Ra:90  
LENS:PM-1082C 50R  
DRIVER:PUP20A-1WMC 350mA  
30minutes warm-up

### WEC AND CCEC

Test:U:120.16V I:0.1162A P:13.844W PF:0.9901 Freq:59.98Hz Lamp Flux:1402.44x1 lm		
NAME: 2318.115-LEA-14	TYPE:	WEIGHT:
SPEC.: 3000K	DIM.:	SERIAL No.: 2312181458
MFR.: RISE	SUR.: 0.0007065m2	Shielding Angle:

pcc	80%			70%			50%			30%			10%			0
pw	50%	30%	10%	50%	30%	10%	50%	30%	10%	50%	30%	10%	50%	30%	10%	0
pfc	20%			20%			20%			20%			20%			0
RCR	RCR:Room Cavity Ratio						Wall Exitance Coefficients(WEC)									
0.0																
1.0	.104	.059	.019	.100	.057	.018	.092	.053	.017	.085	.049	.016	.078	.045	.015	
2.0	.099	.054	.017	.095	.053	.016	.089	.049	.015	.083	.046	.015	.077	.043	.014	
3.0	.094	.050	.015	.091	.049	.015	.085	.046	.014	.080	.044	.013	.075	.042	.013	
4.0	.089	.046	.014	.087	.045	.013	.082	.043	.013	.077	.042	.013	.073	.040	.012	
5.0	.085	.043	.013	.083	.043	.012	.079	.041	.012	.075	.040	.012	.071	.038	.011	
6.0	.081	.041	.012	.080	.040	.012	.076	.039	.011	.072	.038	.011	.069	.036	.011	
7.0	.078	.039	.011	.076	.038	.011	.073	.037	.011	.070	.036	.010	.067	.035	.010	
8.0	.075	.037	.010	.073	.036	.010	.070	.035	.010	.068	.034	.010	.065	.033	.010	
9.0	.072	.035	.010	.071	.034	.010	.068	.034	.010	.066	.033	.009	.063	.032	.009	
10.0	.069	.033	.009	.068	.033	.009	.066	.032	.009	.064	.032	.009	.061	.031	.009	

pcc	80%			70%			50%			30%			10%			0	
pw	50%	30%	10%	50%	30%	10%	50%	30%	10%	50%	30%	10%	50%	30%	10%	0	
pfc	20%			20%			20%			20%			20%			0	
RCR	RCR:Room Cavity Ratio						Ceiling Cavity Exitance Coefficients(CCEC)										
0.0	.122	.122	.122	.105	.105	.105	.071	.071	.071	.041	.041	.041	.013	.013	.013		
1.0	.109	.101	.094	.093	.087	.081	.064	.060	.056	.037	.035	.032	.012	.011	.010		
2.0	.099	.085	.074	.085	.073	.064	.058	.051	.044	.033	.029	.026	.011	.010	.008		
3.0	.090	.073	.059	.077	.063	.051	.053	.044	.036	.031	.026	.021	.010	.008	.007		
4.0	.083	.063	.048	.071	.055	.042	.049	.038	.029	.028	.022	.017	.009	.007	.006		
5.0	.077	.056	.040	.067	.048	.034	.046	.034	.024	.027	.020	.014	.009	.006	.005		
6.0	.072	.050	.033	.062	.043	.029	.043	.030	.020	.025	.018	.012	.008	.006	.004		
7.0	.068	.045	.028	.059	.039	.024	.041	.027	.017	.024	.016	.010	.008	.005	.003		
8.0	.065	.041	.024	.056	.035	.021	.038	.025	.015	.022	.015	.009	.007	.005	.003		
9.0	.061	.037	.021	.053	.032	.018	.037	.023	.013	.021	.013	.008	.007	.004	.003		
10.0	.058	.034	.018	.050	.030	.016	.035	.021	.011	.020	.012	.007	.007	.004	.002		

C Range: 0 - 360DEG  
C Interval: 30.0DEG  
Test Speed: HIGH  
Temperature:25.3℃  
Operators:zoe  
Test Date:2023-12-18

γ Range: 0 - 180DEG  
γ Interval: 1.0DEG  
Test System:EVERFINE GO-SPEX500\_V1 SYSTEM V2.00.461  
Humidity:65.0%  
Test Distance:3.160m [K=1.0000]  
Remarks: LAMP:BXRE-30G1000-A-83 Ra:90  
LENS:PM-1082C 50R  
DRIVER:PUP20A-1WMC 350mA  
30minutes warm-up

## UGR(Unified Glare Rating) Table

Test:U:120.16V I:0.1162A P:13.844W PF:0.9901 Freq:59.98Hz Lamp Flux:1402.44x1 lm										
NAME: 2318.115-LEA-14					TYPE:			WEIGHT:		
SPEC.: 3000K					DIM.:			SERIAL No.: 2312181458		
MFR.: RISE					SUR.: 0.0007065m2			Shielding Angle:		
ceiling/cavity	0.7	0.7	0.5	0.5	0.3	0.7	0.7	0.5	0.5	0.3
walls	0.5	0.3	0.5	0.3	0.3	0.5	0.3	0.5	0.3	0.3
working plane	0.2	0.2	0.2	0.2	0.2	0.2	0.2	0.2	0.2	0.2
Room dimensions	Viewed crosswise					Viewed endwise				
x = 2H y = 2H	20.7	21.6	20.9	21.7	21.9	20.8	21.7	21.0	21.8	22.0
3H	20.5	21.3	20.8	21.5	21.7	20.6	21.4	20.9	21.6	21.8
4H	20.5	21.2	20.7	21.4	21.6	20.6	21.3	20.8	21.5	21.7
6H	20.4	21.1	20.7	21.3	21.5	20.5	21.2	20.8	21.4	21.6
8H	20.3	21.0	20.6	21.2	21.5	20.4	21.1	20.7	21.3	21.6
12H	20.3	20.9	20.6	21.2	21.5	20.4	21.0	20.7	21.3	21.6
4H 2H	20.5	21.2	20.7	21.4	21.6	20.6	21.3	20.8	21.5	21.7
3H	20.3	20.9	20.6	21.2	21.5	20.4	21.0	20.7	21.3	21.6
4H	20.2	20.8	20.5	21.1	21.4	20.3	20.9	20.6	21.2	21.5
6H	20.1	20.6	20.5	20.9	21.3	20.2	20.7	20.6	21.0	21.4
8H	20.0	20.5	20.4	20.9	21.2	20.1	20.6	20.5	21.0	21.3
12H	20.0	20.4	20.4	20.8	21.2	20.1	20.5	20.5	20.9	21.3
8H 4H	20.0	20.5	20.4	20.9	21.2	20.1	20.6	20.5	21.0	21.3
6H	19.9	20.3	20.4	20.7	21.1	20.0	20.4	20.5	20.8	21.2
8H	19.9	20.2	20.3	20.6	21.1	20.0	20.3	20.4	20.7	21.2
12H	19.8	20.1	20.3	20.5	21.0	19.9	20.2	20.4	20.7	21.1
12H 4H	20.0	20.4	20.4	20.8	21.2	20.1	20.5	20.5	20.9	21.3
6H	19.9	20.2	20.3	20.6	21.1	20.0	20.3	20.4	20.7	21.2
8H	19.8	20.1	20.3	20.5	21.0	19.9	20.2	20.4	20.7	21.1
Variations with the observer position at spacings(CIE Pub.117):										
S = 1.0H	+ 4.9 / -22.3					+ 5.1 / -21.4				
1.5H	+ 7.7 / -21.6					+ 7.8 / -21.1				
2.0H	+ 8.6 / - 7.6					+ 8.2 / - 7.9				

CIE Pub.117, 1402 lm Total Lamp Luminous Flux Correct (8log(F/F0) = 1.2)  
Area: 0.0007065 m2

C Range: 0 - 360DEG  
C Interval: 30.0DEG  
Test Speed: HIGH  
Temperature:25.3℃  
Operators:zoe  
Test Date:2023-12-18

γ Range: 0 - 180DEG  
γ Interval: 1.0DEG  
Test System:EVERFINE GO-SPEX500\_V1 SYSTEM V2.00.461  
Humidity:65.0%  
Test Distance:3.160m [K=1.0000]  
Remarks: LAMP:BXRE-30G1000-A-83 Ra:90  
LENS:PM-1082C 50R  
DRIVER:PUP20A-1WMC 350mA  
30minutes warm-up



### UTILIZATION FACTORS TABLE

Test:U:120.16V I:0.1162A P:13.844W PF:0.9901 Freq:59.98Hz Lamp Flux:1402.44x1 lm		
NAME: 2318.115-LEA-14	TYPE:	WEIGHT:
SPEC.: 3000K	DIM.:	SERIAL No.: 2312181458
MFR.: RISE	SUR.: 0.0007065m2	Shielding Angle:

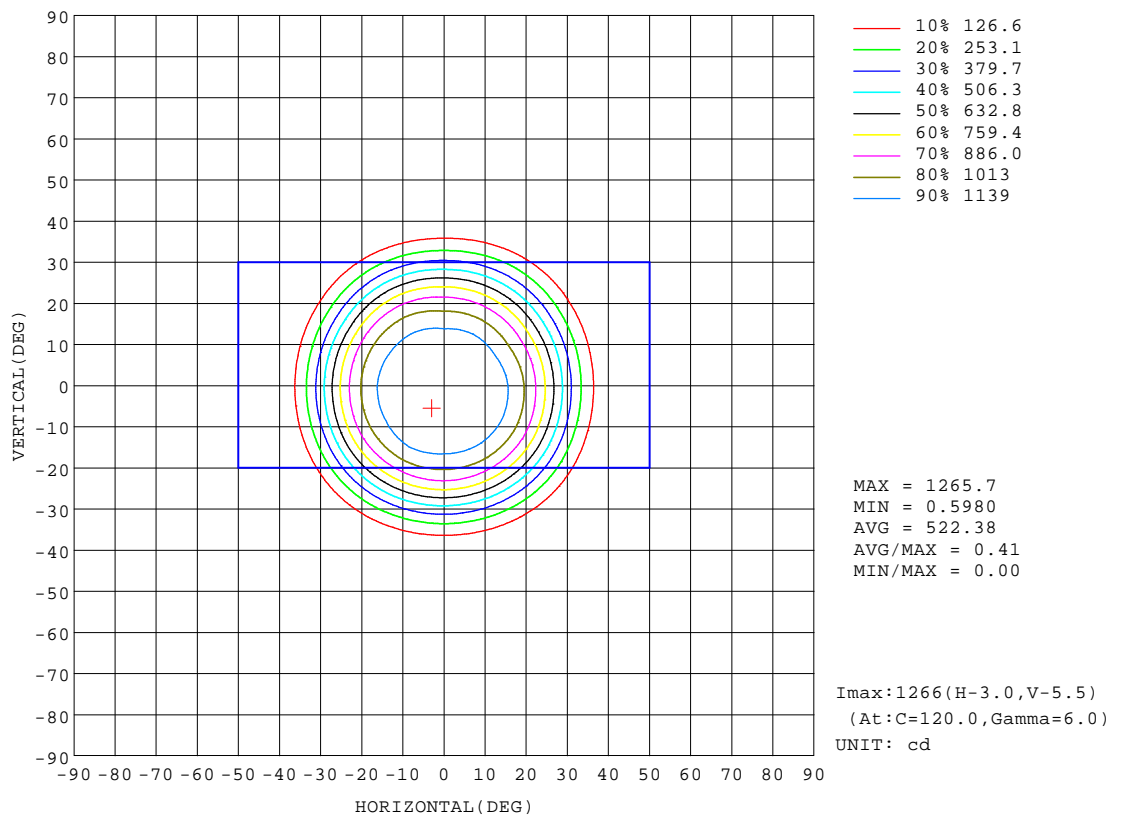
REFLECTANCE										
Ceiling	0.8	0.8	0.8	0.7	0.7	0.7	0.5	0.5	0.5	0
Walls	0.7	0.5	0.3	0.7	0.5	0.3	0.7	0.5	0.3	0
Working plane	0.2	0.2	0.2	0.2	0.2	0.2	0.2	0.2	0.2	0
ROOM INDEX	UTILIZATION FACTORS(PERCENT) $k(RI) \times RCR = 5$									
k = 0.60	58	55	53	58	55	52	58	54	52	50
0.80	63	59	57	62	59	57	62	59	57	55
1.00	65	62	60	65	62	60	64	62	59	57
1.25	68	65	63	67	64	62	66	63	62	59
1.50	69	66	64	68	66	64	67	65	63	61
2.00	71	68	66	70	67	66	68	66	65	62
2.50	71	69	68	70	68	67	69	67	66	62
3.00	72	70	69	71	69	68	69	68	67	63
4.00	74	72	71	72	71	70	70	69	68	64
5.00	74	73	72	73	72	71	70	70	69	64
ROOM INDEX	UF(total)									Direct
According to DIN EN 13032-2 2004			Suspended					SHRNOM = 1.25		

C Range: 0 - 360DEG  
C Interval: 30.0DEG  
Test Speed: HIGH  
Temperature:25.3℃  
Operators:zoe  
Test Date:2023-12-18

γ Range: 0 - 180DEG  
γ Interval: 1.0DEG  
Test System:EVERFINE GO-SPEX500\_V1 SYSTEM V2.00.461  
Humidity:65.0%  
Test Distance:3.160m [K=1.0000]  
Remarks: LAMP:BXRE-30G1000-A-83 Ra:90  
LENS:PM-1082C 50R  
DRIVER:PUP20A-1WMC 350mA  
30minutes warm-up

## ISOCANDELA DIAGRAM

Test:U:120.16V I:0.1162A P:13.844W PF:0.9901 Freq:59.98Hz Lamp Flux:1402.44x1 lm		
NAME: 2318.115-LEA-14	TYPE:	WEIGHT:
SPEC.: 3000K	DIM.:	SERIAL No.: 2312181458
MFR.: RISE	SUR.: 0.0007065m2	Shielding Angle:

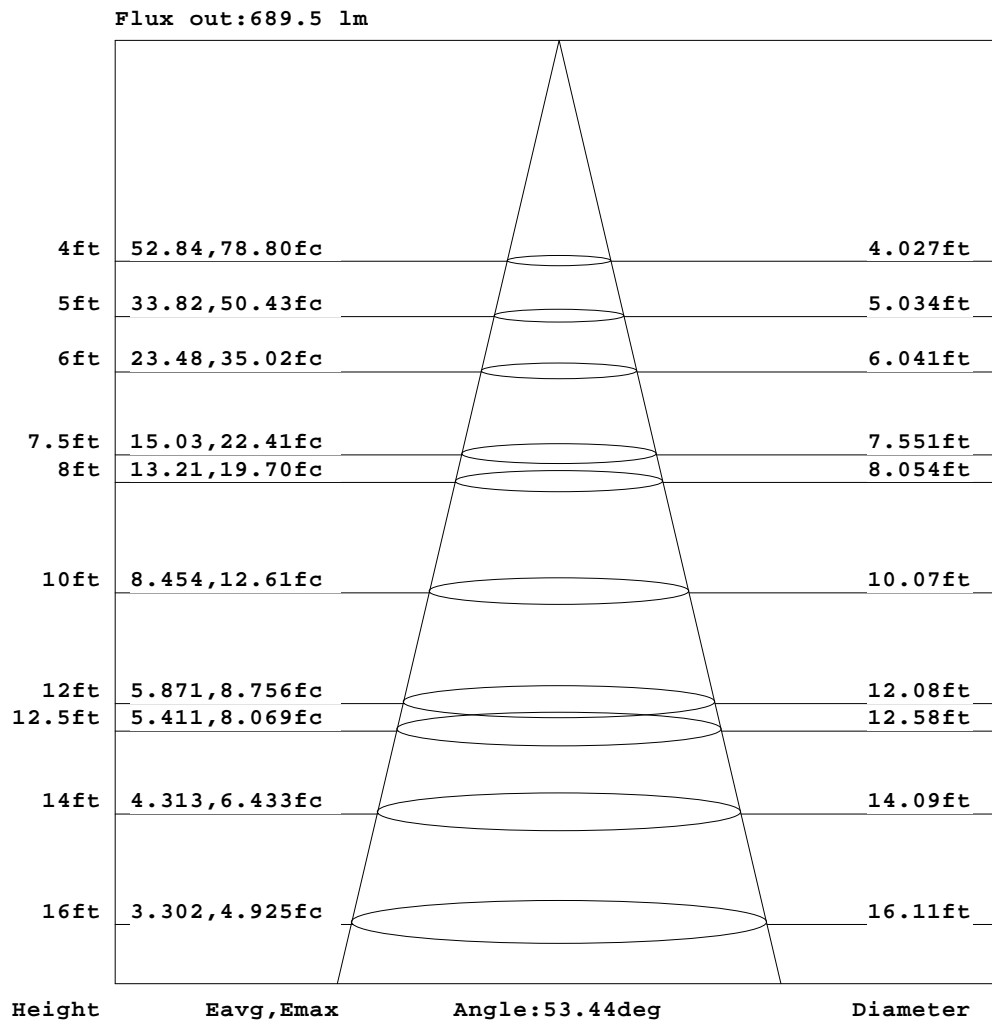


C Range: 0 - 360DEG  
C Interval: 30.0DEG  
Test Speed: HIGH  
Temperature:25.3℃  
Operators:zoe  
Test Date:2023-12-18

γ Range: 0 - 180DEG  
γ Interval: 1.0DEG  
Test System:EVERFINE GO-SPEX500\_V1 SYSTEM V2.00.461  
Humidity:65.0%  
Test Distance:3.160m [K=1.0000]  
Remarks: LAMP:BXRE-30G1000-A-83 Ra:90  
LENS:PM-1082C 50R  
DRIVER:PUP20A-1WMC 350mA  
30minutes warm-up

## AAI Figure

Test:U:120.16V I:0.1162A P:13.844W PF:0.9901 Freq:59.98Hz Lamp Flux:1402.44x1 lm		
NAME: 2318.115-LEA-14	TYPE:	WEIGHT:
SPEC.: 3000K	DIM.:	SERIAL No.: 2312181458
MFR.: RISE	SUR.: 0.0007065m2	Shielding Angle:



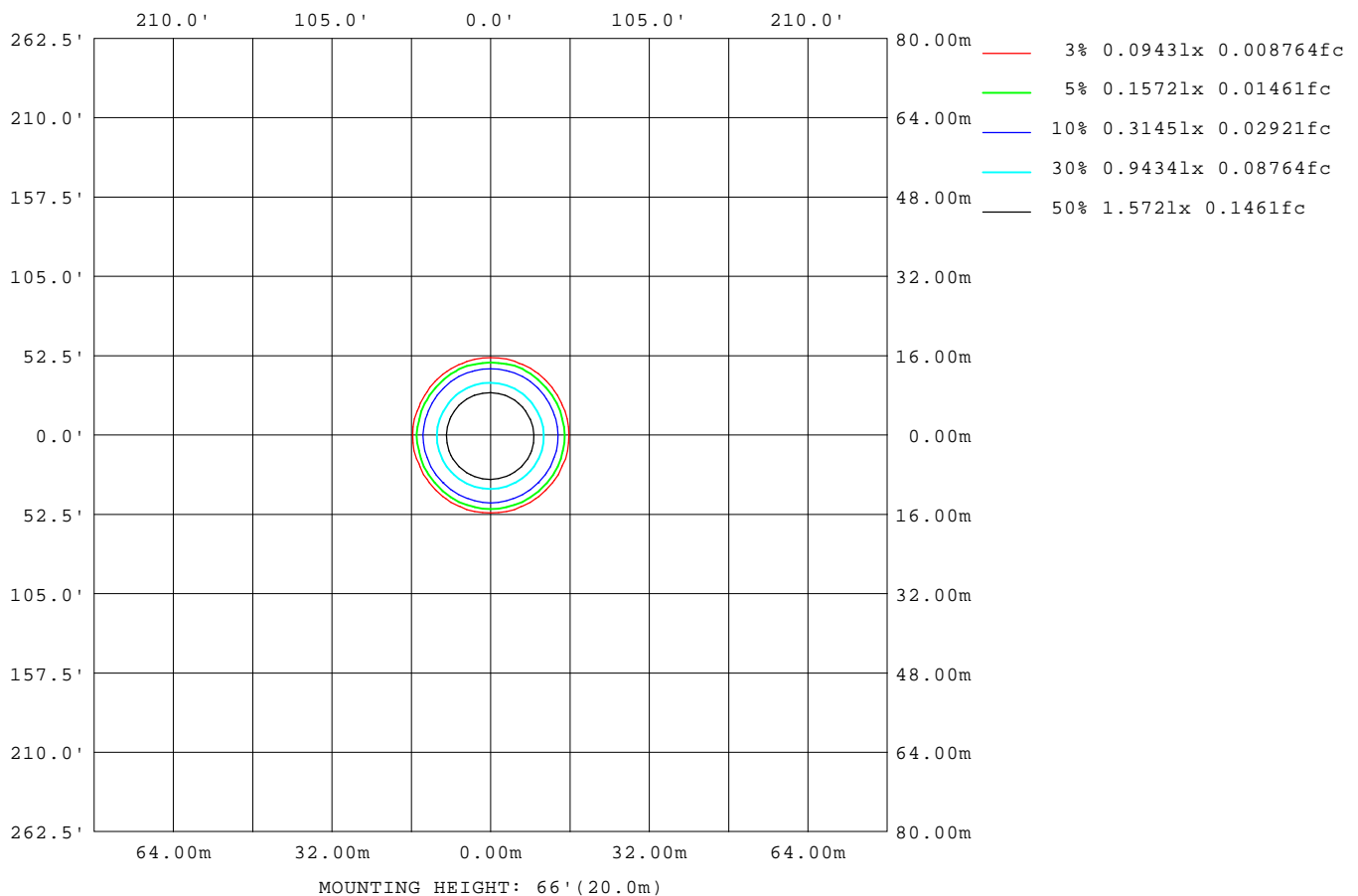
Note: The Curves indicate the illuminated area and the average illumination when the luminaire is at different distance.

C Range: 0 - 360DEG  
C Interval: 30.0DEG  
Test Speed: HIGH  
Temperature: 25.3°C  
Operators: zoe  
Test Date: 2023-12-18

γ Range: 0 - 180DEG  
γ Interval: 1.0DEG  
Test System: EVERFINE GO-SPEX500\_V1 SYSTEM V2.00.461  
Humidity: 65.0%  
Test Distance: 3.160m [K=1.0000]  
Remarks: LAMP: BXRE-30G1000-A-83 Ra: 90  
LENS: PM-1082C 50R  
DRIVER: PUP20A-1WMC 350mA  
30minutes warm-up

## ISOLUX DIAGRAM

Test:U:120.16V I:0.1162A P:13.844W PF:0.9901 Freq:59.98Hz Lamp Flux:1402.44x1 lm		
NAME: 2318.115-LEA-14	TYPE:	WEIGHT:
SPEC.: 3000K	DIM.:	SERIAL No.: 2312181458
MFR.: RISE	SUR.: 0.0007065m2	Shielding Angle:



C Range: 0 - 360DEG  
C Interval: 30.0DEG  
Test Speed: HIGH  
Temperature:25.3°C  
Operators:zoe  
Test Date:2023-12-18

γ Range: 0 - 180DEG  
γ Interval: 1.0DEG  
Test System:EVERFINE GO-SPEX500\_V1 SYSTEM V2.00.461  
Humidity:65.0%  
Test Distance:3.160m [K=1.0000]  
Remarks: LAMP:BXRE-30G1000-A-83 Ra:90  
LENS:PM-1082C 50R  
DRIVER:PUP20A-1WMC 350mA  
30minutes warm-up

## LED Avg.L Report

Test:U:120.16V I:0.1162A P:13.844W PF:0.9901 Freq:59.98Hz Lamp Flux:1402.44x1 lm		
NAME: 2318.115-LEA-14	TYPE:	WEIGHT:
SPEC.: 3000K	DIM.:	SERIAL No.: 2312181458
MFR.: RISE	SUR.: 0.0007065m2	Shielding Angle:

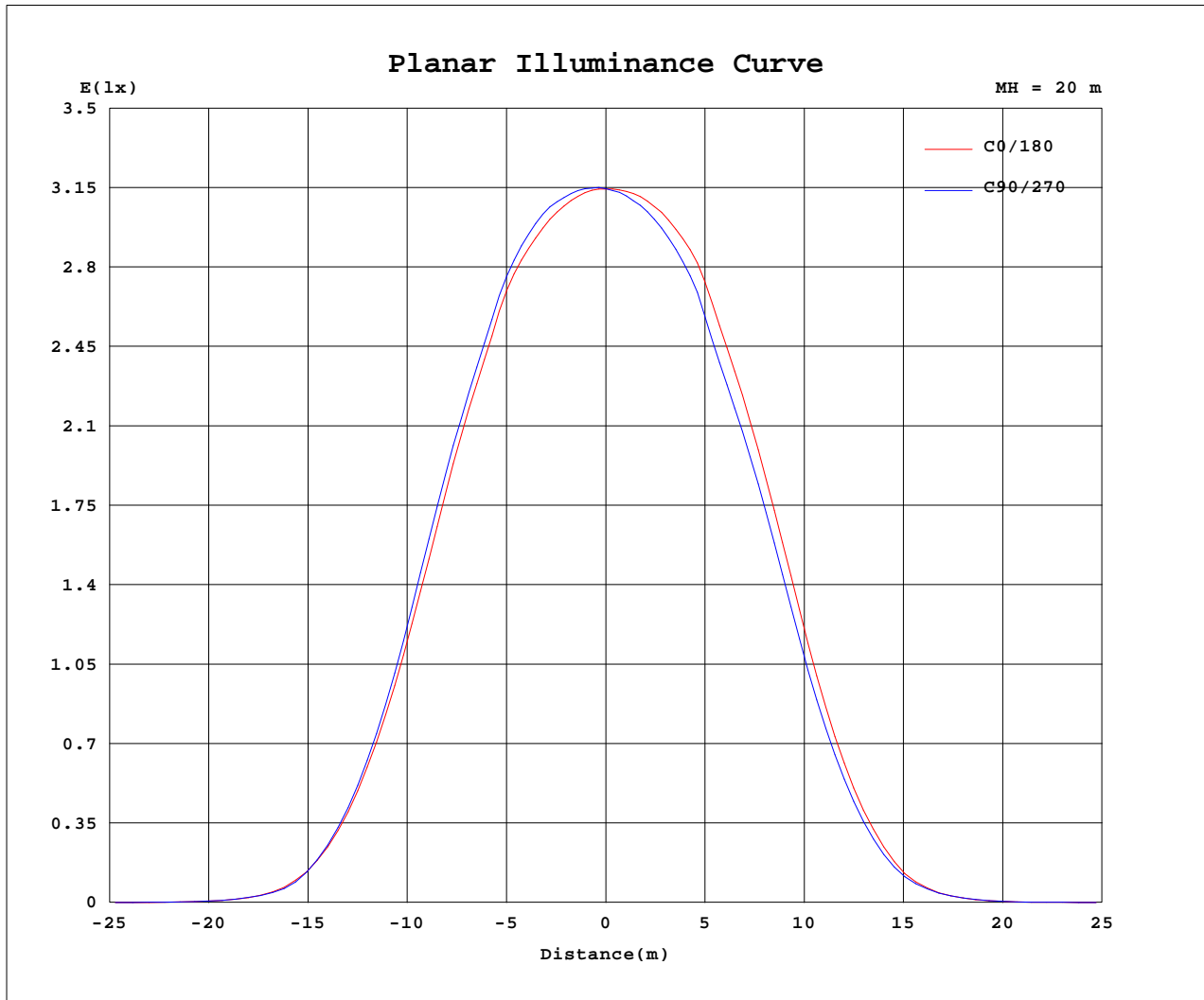
AvgL	cd/m2
L_0~180(65)av	1183
L_0~180(75)av	695
L_0~180(85)av	458
L_90~270(65)av	1375
L_90~270(75)av	725
L_90~270(85)av	426
L_45(65)av	1381
L_45(75)av	743
L_45(85)av	338

Standard: GB/T 29293-2012

C Range: 0 - 360DEG  
C Interval: 30.0DEG  
Test Speed: HIGH  
Temperature:25.3℃  
Operators:zoe  
Test Date:2023-12-18

γ Range: 0 - 180DEG  
γ Interval: 1.0DEG  
Test System:EVERFINE GO-SPEX500\_V1 SYSTEM V2.00.461  
Humidity:65.0%  
Test Distance:3.160m [K=1.0000]  
Remarks: LAMP:BXRE-30G1000-A-83 Ra:90  
LENS:PM-1082C 50R  
DRIVER:PUP20A-1WMC 350mA  
30minutes warm-up

## Planar Illuminance Curve



C Range: 0 - 360DEG  
 C Interval: 30.0DEG  
 Test Speed: HIGH  
 Temperature: 25.3 °C  
 Operators: zoe  
 Test Date: 2023-12-18

γ Range: 0 - 180DEG  
 γ Interval: 1.0DEG  
 Test System: EVERFINE GO-SPEX500\_V1 SYSTEM V2.00.461  
 Humidity: 65.0%  
 Test Distance: 3.160m [K=1.0000]  
 Remarks: LAMP: BXRE-30G1000-A-83 Ra:90  
 LENS: PM-1082C 50R  
 DRIVER: PUP20A-1WMC 350mA  
 30minutes warm-up

## LUMINOUS DISTRIBUTION INTENSITY DATA

Test:U:120.16V I:0.1162A P:13.844W PF:0.9901 Freq:59.98Hz Lamp Flux:1402.44x1 lm		
NAME: 2318.115-LEA-14	TYPE:	WEIGHT:
SPEC.: 3000K	DIM.:	SERIAL No.: 2312181458
MFR.: RISE	SUR.: 0.0007065m2	Shielding Angle:

Table--1

UNIT: cd

C(DEG) γ (DEG)	0	30	60	90	120	150	180	210	240	270	300	330						
0	1258	1258	1258	1258	1258	1258	1258	1258	1258	1258	1258	1258						
5	1252	1258	1261	1264	1264	1262	1259	1253	1247	1243	1242	1245						
10	1227	1241	1249	1253	1257	1248	1243	1232	1220	1206	1209	1211						
15	1157	1176	1187	1187	1200	1181	1173	1148	1133	1100	1117	1119						
20	993	1019	1026	1029	1037	1031	1022	999	978	947	951	956						
25	737	764	772	781	785	788	774	743	729	700	702	704						
30	436	452	454	459	464	462	451	420	418	402	410	410						
35	179	187	185	185	185	184	179	162	163	155	167	166						
40	41.9	41.9	39.9	39.3	41.2	36.9	39.1	37.2	39.2	37.9	40.8	39.6						
45	8.06	8.04	8.73	7.99	9.44	7.79	6.69	6.25	6.67	6.66	6.98	7.44						
50	1.45	1.43	1.54	1.96	2.45	2.22	1.66	1.58	1.59	1.77	1.92	1.59						
55	0.49	0.44	0.47	0.75	1.22	1.09	0.85	0.82	0.83	0.95	1.06	0.73						
60	0.32	0.27	0.30	0.48	0.82	0.77	0.65	0.63	0.64	0.71	0.79	0.52						
65	0.26	0.24	0.25	0.35	0.54	0.51	0.45	0.44	0.44	0.47	0.50	0.36						
70	0.17	0.16	0.17	0.21	0.30	0.30	0.27	0.26	0.27	0.28	0.28	0.20						
75	0.11	0.13	0.11	0.11	0.15	0.16	0.15	0.14	0.14	0.15	0.14	0.11						
80	0.07	0.07	0.07	0.07	0.07	0.07	0.07	0.06	0.06	0.07	0.06	0.05						
85	0.03	0.03	0.03	0.03	0.03	0.02	0.02	0.01	0.01	0.02	0.02	0.02						
90	0.00	0.00	0.00	0.00	0.00	0.00	0.00	0.00	0.00	0.00	0.00	0.00						
95	0.00	0.00	0.00	0.00	0.00	0.00	0.00	0.00	0.00	0.00	0.00	0.00						
100	0.00	0.00	0.00	0.00	0.00	0.00	0.00	0.00	0.00	0.00	0.00	0.00						
105	0.00	0.00	0.00	0.00	0.00	0.00	0.00	0.00	0.00	0.00	0.00	0.00						
110	0.00	0.00	0.00	0.00	0.00	0.00	0.00	0.00	0.00	0.00	0.00	0.00						
115	0.00	0.00	0.00	0.00	0.00	0.00	0.00	0.00	0.00	0.00	0.00	0.00						
120	0.00	0.00	0.00	0.00	0.00	0.00	0.00	0.00	0.00	0.00	0.00	0.00						
125	0.00	0.00	0.00	0.00	0.00	0.00	0.00	0.00	0.00	0.00	0.00	0.00						
130	0.00	0.00	0.00	0.00	0.00	0.00	0.00	0.00	0.00	0.00	0.00	0.00						
135	0.00	0.00	0.00	0.00	0.00	0.00	0.00	0.00	0.00	0.00	0.00	0.00						
140	0.00	0.00	0.00	0.00	0.00	0.00	0.00	0.00	0.00	0.00	0.00	0.00						
145	0.00	0.00	0.00	0.00	0.00	0.00	0.00	0.00	0.00	0.00	0.00	0.00						
150	0.00	0.00	0.00	0.00	0.00	0.00	0.00	0.00	0.00	0.00	0.00	0.00						
155	0.00	0.00	0.00	0.00	0.00	0.00	0.00	0.00	0.00	0.00	0.00	0.00						
160	0.00	0.00	0.00	0.00	0.00	0.00	0.00	0.00	0.00	0.00	0.00	0.00						
165	0.00	0.00	0.00	0.00	0.00	0.00	0.00	0.00	0.00	0.00	0.00	0.00						
170	0.00	0.00	0.00	0.00	0.00	0.00	0.00	0.00	0.00	0.00	0.00	0.00						
175	0.00	0.00	0.00	0.00	0.00	0.00	0.00	0.00	0.00	0.00	0.00	0.00						
180	0.00	0.00	0.00	0.00	0.00	0.00	0.00	0.00	0.00	0.00	0.00	0.00						

C Range: 0 - 360DEG  
C Interval: 30.0DEG  
Test Speed: HIGH  
Temperature:25.3℃  
Operators:zoe  
Test Date:2023-12-18

γ Range: 0 - 180DEG  
γ Interval: 1.0DEG  
Test System:EVERFINE GO-SPEX500\_V1 SYSTEM V2.00.461  
Humidity:65.0%  
Test Distance:3.160m [K=1.0000]  
Remarks: LAMP:BXRE-30G1000-A-83 Ra:90  
LENS:PM-1082C 50R  
DRIVER:PUP20A-1WMC 350mA  
30minutes warm-up